

EK SOLAR-PHOTOVOLTAIK



Karić Edin



0043 660 5704195



Hofholzstrasse 5

4713 Gallspach, Österreich



eksolarenergie@gmail.com

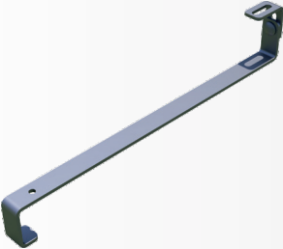


www.eksolarphotovoltaik.at

2x adjustable roof mount DC1

	Height	Width	Length	Thickness	Hole diameter
	Adjustable	150 mm	110 mm	5 mm	9 x 9 mm
			140 mm		

Adjustable roof mount DC2

	Thickness	Width	Length	Long hole	Hole diameter
	4 mm	30 mm	460 mm	11 mm x 40 mm	9 mm
			560 mm		

Roof mount DC3

	Thickness	Width	Length	Long hole	Hole diameter
	4 mm	30 mm	460 mm	11 mm x 40 mm	9 mm

Adjustable roof mount DG

	Height	Width	Length	Thickness	Hole diameter
	Adjustable	30 mm	250 mm	4 mm	3 x 9 mm

Mounting adapter

	Height	Width	Thickness	Long hole	Hole diameter
	30 mm	80 mm	5 mm	11 mm x 40 mm	11 mm

Sliding nut with ball Nutenstein M8

	Height	Width	Length	Thread diameter
	10 mm	13 mm	22 mm	8 mm

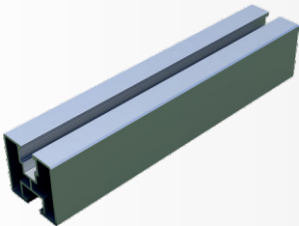
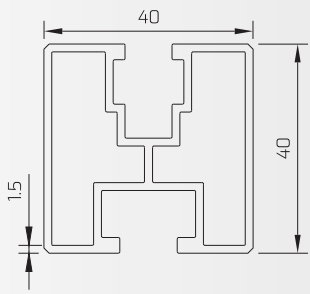
Rail connector for mounting rail

	Height	Width	Length	Thickness	Hole diameter
	24,5 mm	40 mm	120 mm	2,5 mm	2 x 11 mm

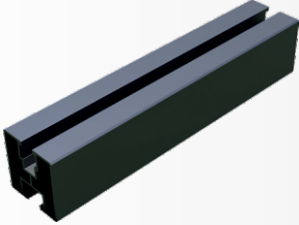
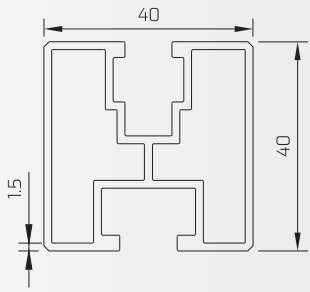
Rail connector for mounting rail black

	Height	Width	Length	Thickness	Hole diameter
	24,5 mm	40 mm	120 mm	2,5 mm	2 x 11 mm

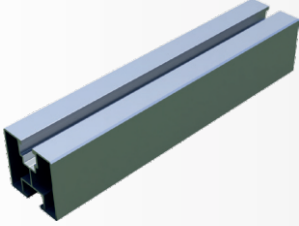
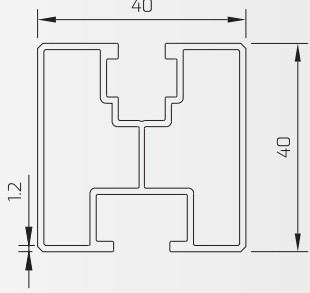
Mounting rail SMA 40x40x1,5

		Length	Upper channel	Bottom channel
		2200 mm	Sliding nut Nutenstein M8	Hex bolt M10
		2500 mm		
		3300 mm		

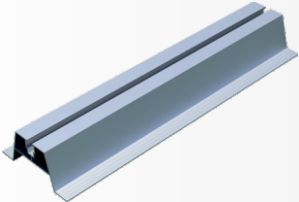
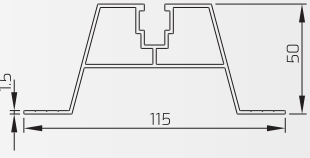
Mounting rail black SMA 40x40x1,5

		Length	Upper channel	Bottom channel
		1950 mm	Sliding nut Nutenstein M8	Hex bolt M10
		2200 mm		
		2500 mm		
3300 mm				

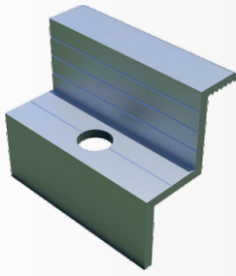
Mounting rail LIGHT SMA 40x40x1,2

		Length	Upper channel	Bottom channel
		2200 mm	Sliding nut Nutenstein M8	Hex bolt M10

Trapezoidal bridge SMA 50x115x1,5

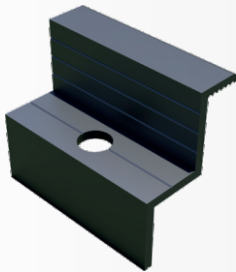
		Length	Upper channel
		330 mm	Sliding nut Nutenstein M8
		400 mm	
		500 mm	

End clamp



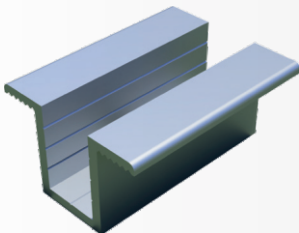
Width	Length
30 mm	50 mm
35 mm	50 mm
40 mm	50 mm

End clamp black



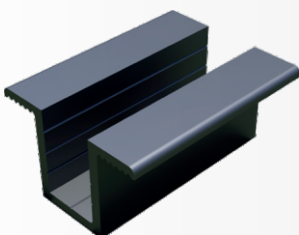
Width	Length
30 mm	50 mm
35 mm	50 mm
40 mm	50 mm

Center clamp 50x24



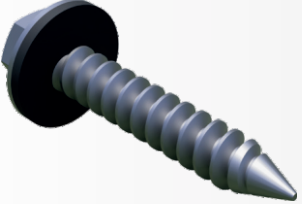
Height	Width	Length	Thickness	Hole diameter
24 mm	40 mm	50 mm	3 mm	1 x 9 mm

Center clamp black 50x24



Height	Width	Length	Thickness	Hole diameter
24 mm	40 mm	50 mm	3 mm	1 x 9 mm

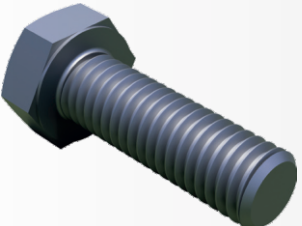
sheet metal screw with dense thread M6

	Thread length	Thread diameter	Head height	Head diameter	Height
	25 mm	6 mm	6 mm	8 mm	31 mm

Wood screw TCS

	Thread length	Thread diameter	Head height	Head diameter	Height
	60 mm	8 mm	4,6 mm	20 mm	63,8 mm
	80 mm				84,6 mm

Hex bolt

	Thread length	Thread diameter	Head height	Head diameter	Height
	25 mm	10 mm	6,4 mm	17 mm	31,4 mm

Allen screw M8

	Thread length	Thread diameter	Head height	Head diameter	Height
	25 mm	8 mm	8 mm	13 mm	33 mm
	30 mm				38 mm
	35 mm				43 mm
	40 mm				48 mm
	45 mm				53 mm

Double thread screw

	Thread length for wood	Thread diameter for wood	Metric thread length	Height
	70 mm	10 mm	110 mm	200 mm
	81 mm		130 mm	250 mm
	67 mm		150 mm	300 mm

Serrated collar nut

	Height	Thread diameter	Flange diameter	Head diameter
	10 mm	10 mm	21,8 mm	15 mm


End cap for SMA mounting rail 40x40x1,5

	Height	Width	Length
	31 mm	44 mm	44 mm

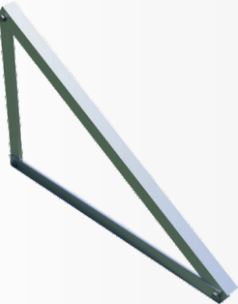
End cap for SMA mounting rail black 40x40x1,5

	Height	Width	Length
	31 mm	44 mm	44 mm

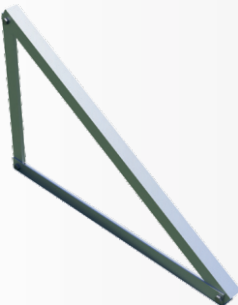
Bracket Bifacial

	The angle of inclination of the triangles	Arrangement of modules	Length	Thickness
	15°	Horizontal	1700 mm	1,5 mm

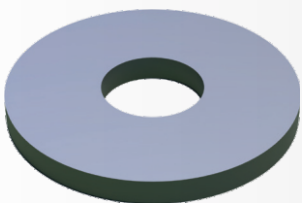
Invasive mounting triangle

	The angle of inclination of the triangles	Arrangement of modules	Thickness
	15° - 35°	Vertical	3 mm +/-
Horizontal			

Non invasive mounting triangle

	The angle of inclination of the triangles	Arrangement of modules	Thickness
	15° - 35°	Vertical	3 mm +/-
Horizontal			

Enlarged round washer

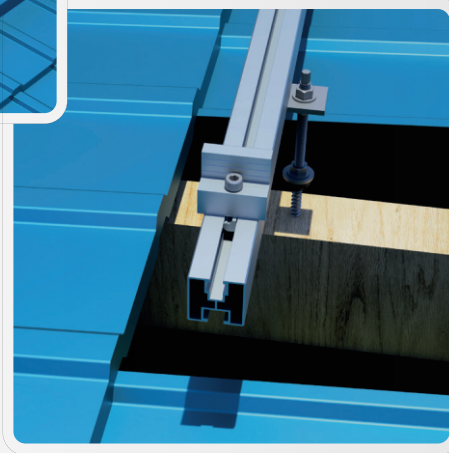
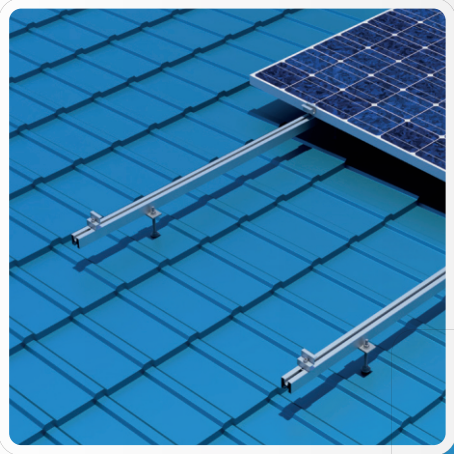
	Diameter	Hole diameter	Thickness
	30 mm	10,5 mm	2,5 mm

MOUNTING SYSTEMS



SLOPING ROOF & FLAT ROOF



SLOPING ROOF, STEEL TILE



Arrangement of modules:

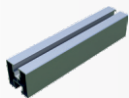
Vertical	
Horizontal	

Material of execution:

stainless steel A2, aluminum 6060 T66

Height adjustment of the handle

10 year warranty



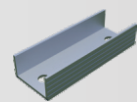
**Mounting rail SMA
40x40x1,5**



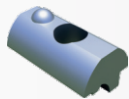
Double thread screw



Mounting adapter



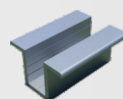
**Rail connector for
mounting rail**



**Sliding nut with ball
Nutenstein M8**



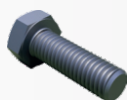
End clamp



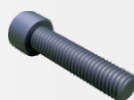
Center clamp



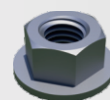
**End cap for SMA
mounting rail**



Hex bolt

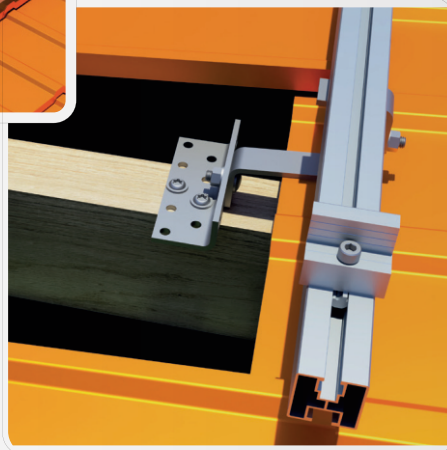
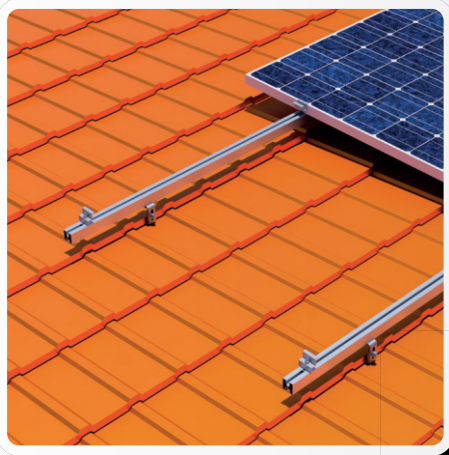


Allen screw M8



Serrated collar nut

SLOPING ROOF, CERAMIC TILE



Arrangement of modules:

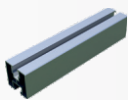
Vertical	
Horizontal	

Material of execution:

stainless steel A2, aluminum 6060 T66

Height adjustment of the handle

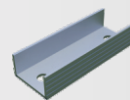
10 year warranty



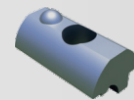
Mounting rail SMA
40x40x1,5



2x adjustable roof mount
DC1



Rail connector for mounting rail



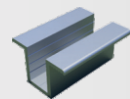
Sliding nut with ball
Nutenstein M8



TCS wood screw
with a incision



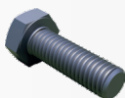
End clamp



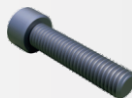
Center clamp



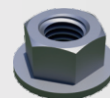
End cap for SMA
mounting rail



Hex bolt

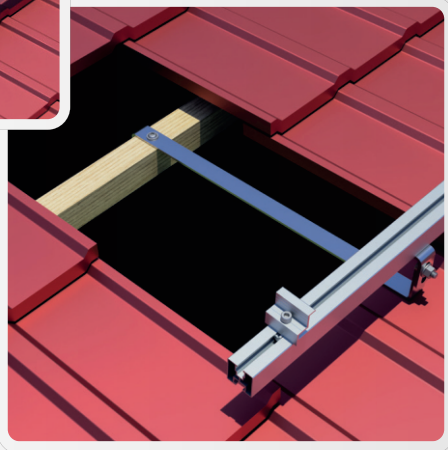
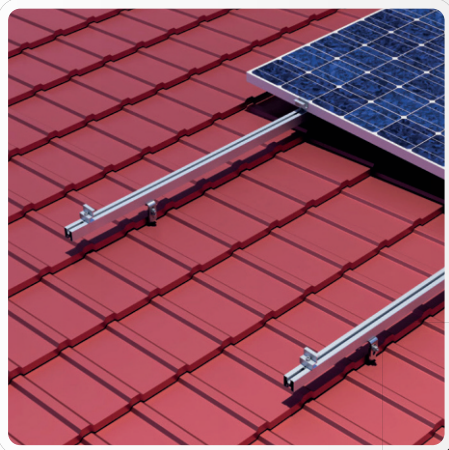


Allen screw M8



Serrated collar nut

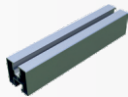
SLOPING ROOF, CERAMIC TILE



Arrangement of modules:

Vertical	
Horizontal	

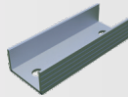
Material of execution:
 stainless steel A2, aluminum 6060 T66
 Height adjustment of the handle
10 year warranty



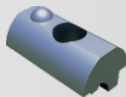
**Mounting rail SMA
40x40x1,5**



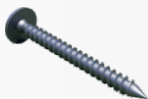
**Adjustable roof mount
DC2**



**Rail connector for
mounting rail**



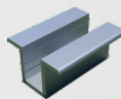
**Sliding nut with ball
Nutenstein M8**



**TCS wood screw
with a incision**



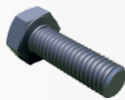
End clamp



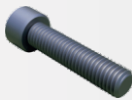
Center clamp



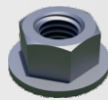
**End cap for SMA
mounting rail**



Hex bolt

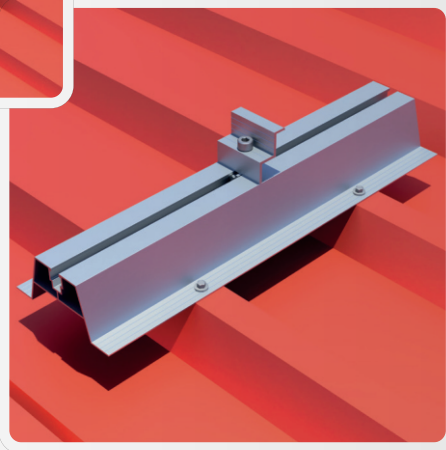
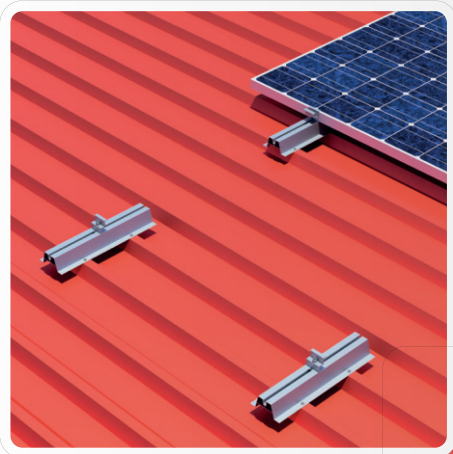


Allen screw M8



Serrated collar nut

SLOPING ROOF, TRAPEZOIDAL ROOF



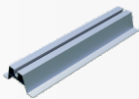
Arrangement of modules:

Vertical	
Horizontal	

Material of execution:

stainless steel A2, aluminum 6060 T66

10 year warranty



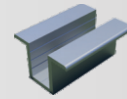
**Trapezoidal bridge SMA
50x115x1,5**



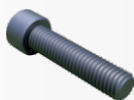
**sheet metal screw with
dense thread M6**



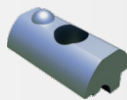
End clamp



Center clamp

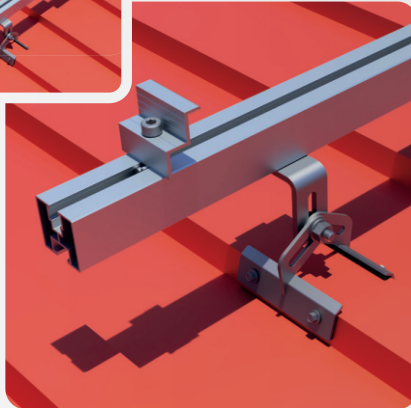


Allen screw M8



**Sliding nut with ball
Nutenstein M8**

SLOPING ROOF, TRAPEZOIDAL ROOF



Arrangement of modules:

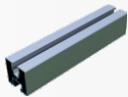
Vertical	
Horizontal	

Material of execution:

stainless steel A2, aluminum 6060 T66

Height adjustment of the handle

10 year warranty



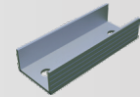
Mounting rail SMA
40x40x1,5



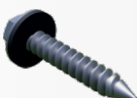
Trapezoidal roof mount



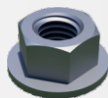
End clamp



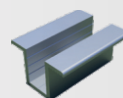
Rail connector for mounting rail



sheet metal screw with dense thread M6



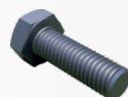
Serrated collar nut



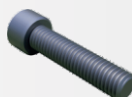
Center clamp



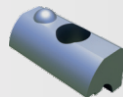
End cap for SMA mounting rail



Hex bolt

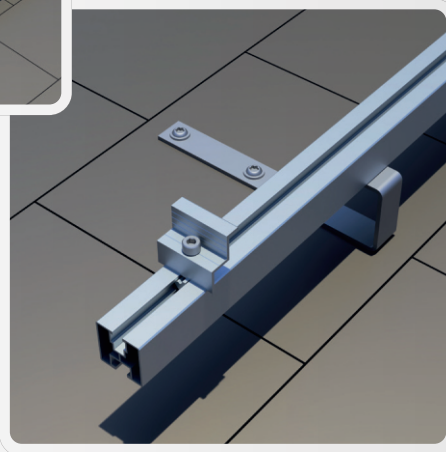
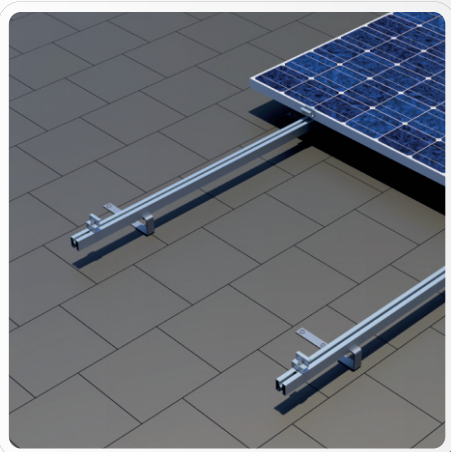


Allen screw M8



Sliding nut with ball Nutenstein M8

SLOPING ROOF, SHINGLES ROOF



Arrangement of modules:

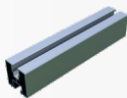
Vertical	
Horizontal	

Material of execution:

stainless steel A2, aluminum 6060 T66

Height adjustment of the handle

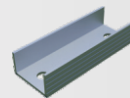
10 year warranty



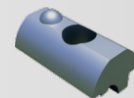
Mounting rail SMA
40x40x1,5



Adjustable roof mount
DG



Rail connector for
mounting rail



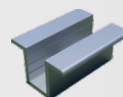
Sliding nut with ball
Nutenstein M8



TCS wood screw
with a incision



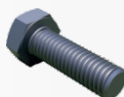
End clamp



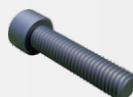
Center clamp



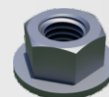
End cap for SMA
mounting rail



Hex bolt

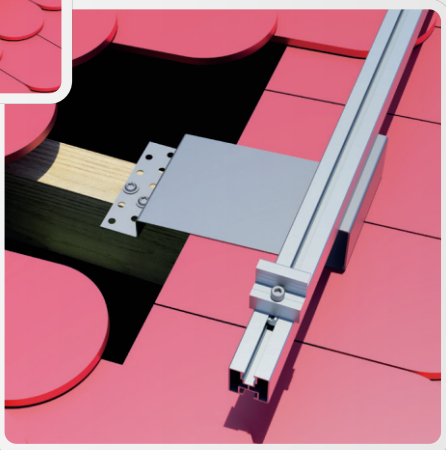


Allen screw M8

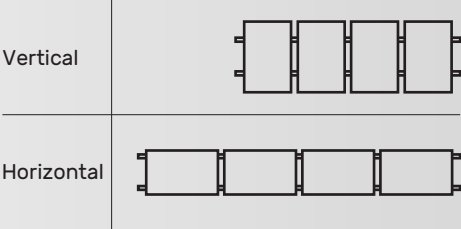


Serrated collar nut

SLOPING ROOF, CARP TILES



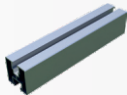
Arrangement of modules:



Material of execution:

stainless steel A2, aluminum 6060 T66

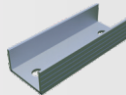
10 year warranty



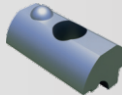
**Mounting rail SMA
40x40x1,5**



**End cap for SMA
mounting rail**



**Rail connector for
mounting rail**



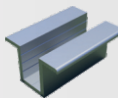
**Sliding nut with ball
Nutenstein M8**



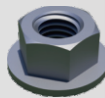
**TCS wood screw
with a incision**



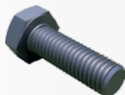
End clamp



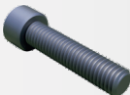
Center clamp



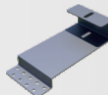
Serrated collar nut



Hex bolt

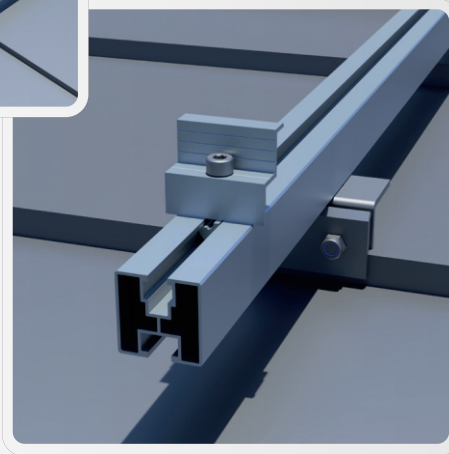
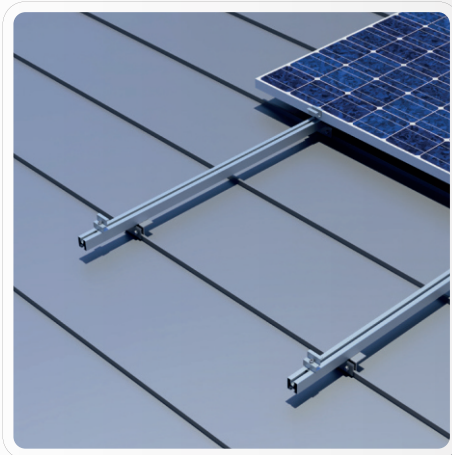


Allen screw M8



**Adjustable roof mount
DK**

SLOPING ROOF, STANDING SEAM ROOF STEEL



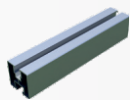
Arrangement of modules:

Vertical	
Horizontal	

Material of execution:

stainless steel A2, aluminum 6060 T66

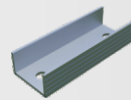
10 year warranty



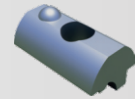
Mounting rail SMA
40x40x1,5



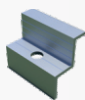
End cap for SMA
mounting rail



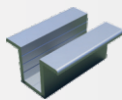
Rail connector for
mounting rail



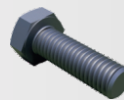
Sliding nut with ball
Nutenstein M8



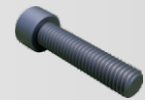
End clamp



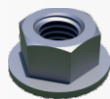
Center clamp



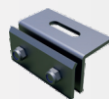
Hex bolt



Allen screw M8

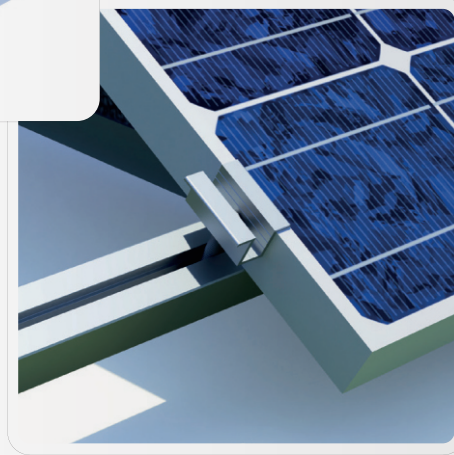
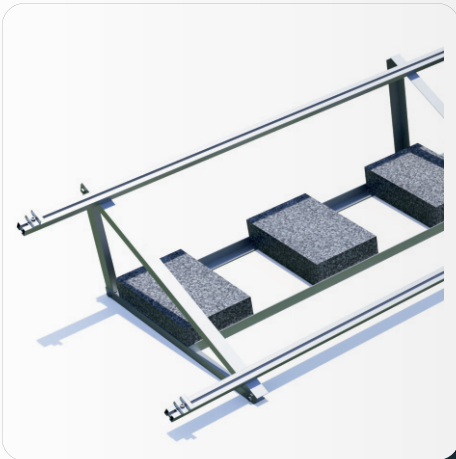


Serrated collar nut



Adjustable roof mount
DR

FLAT ROOF, Non-INVASIVE ASSEMBLY



Arrangement of modules:

Vertical	
Horizontal	

Material of execution:

stainless steel A2, aluminum 6060 T66

The angle of inclination of the triangle:

15°, 20°, 25°, 30°, 35°

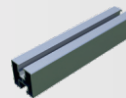
10 year warranty



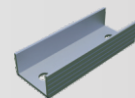
Mounting triangle



Bracket



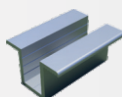
**Mounting rail SMA
40x40x1,5**



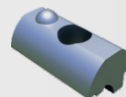
**Rail connector for
mounting rail**



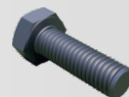
End clamp



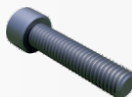
Center clamp



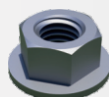
**Sliding nut with ball
Nutenstein M8**



Hex bolt



Allen screw M8

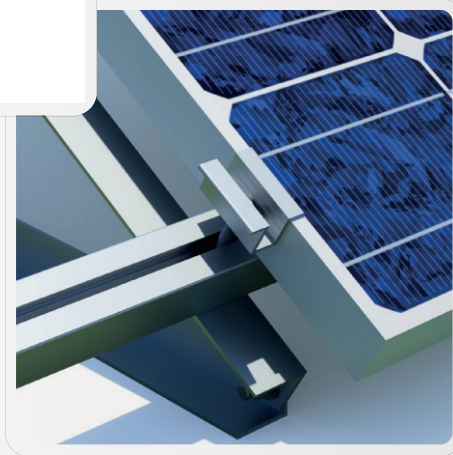


Serrated collar nut



**End cap for SMA
mounting rail**

FLAT ROOF INVASIVE ASSEMBLY



Arrangement of modules:

Vertical	
Horizontal	

Material of execution:

stainless steel A2, aluminum 6060 T66

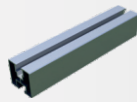
The angle of inclination of the triangle:

15°, 20°, 25°, 30°, 35°

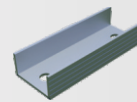
10 year warranty



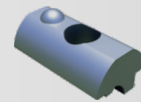
Mounting triangle



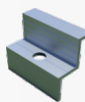
**Mounting rail SMA
40x40x1,5**



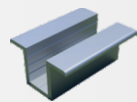
**Rail connector for
mounting rail**



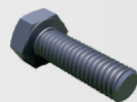
**Sliding nut with ball
Nutenstein M8**



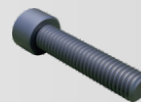
End clamp



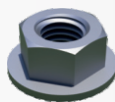
Center clamp



Hex bolt



Allen screw M8

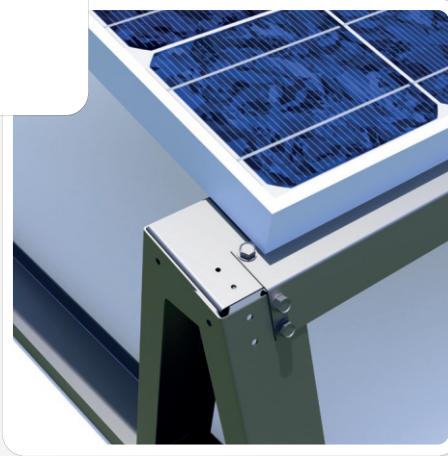
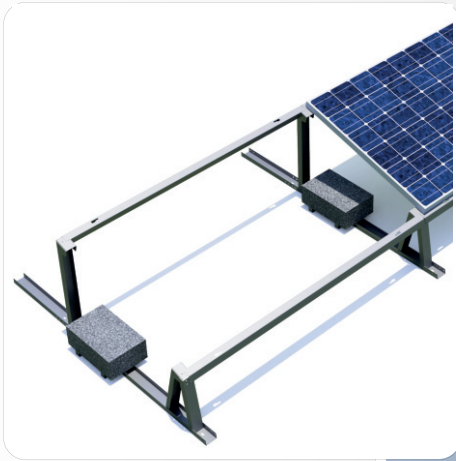


Serrated collar nut

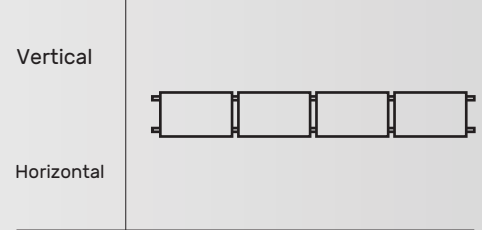


**End cap for SMA
mounting rail**

FLAT ROOF BIFACIAL SYSTEM



Arrangement of moudules:



Material of execution:

stainless steel A2, aluminum 6060 T66,
structural steel with magnelis coating S320 ZM430

The angle of inclination of the triangle:

15°, 20°, 25°, 30°, 35°

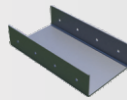
10 year warranty



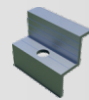
Bifacial brackets



Bifacial module bracket



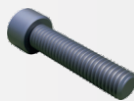
**Bifacial assembly
triangle connector**



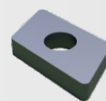
End clamp



**sheet metal screw with
dense thread M6**



Allen screw M8



T-nut